

COPYRIGHT © 2009
THESE PLANS ARE PROTECTED
BY COPYRIGHT LAWS. ANY
UNAUTHORIZED USES MAY
RESULT IN LEGAL ACTION.

ENGINEER'S SEAL

Paul D. Riddle
5/19/09
PAUL D. RIDDLE, P.E.
P.E. 36589

PROJECT DATA

PROPOSED BUILD-OUT FOR:
BULLDITT
CITY OF OCALA, FL

CONTACT INFORMATION

DRAKE
CONSTRUCTION
SERVICES, Inc.
1224 SE FT. KING ST.
OCALA, FL 34471
352-867-8101

REVISIONS, NOTES

1245 SQFT INTERIOR
DRAWN: PAUL RIDDLE, Jr.

DATE 5/19/2009

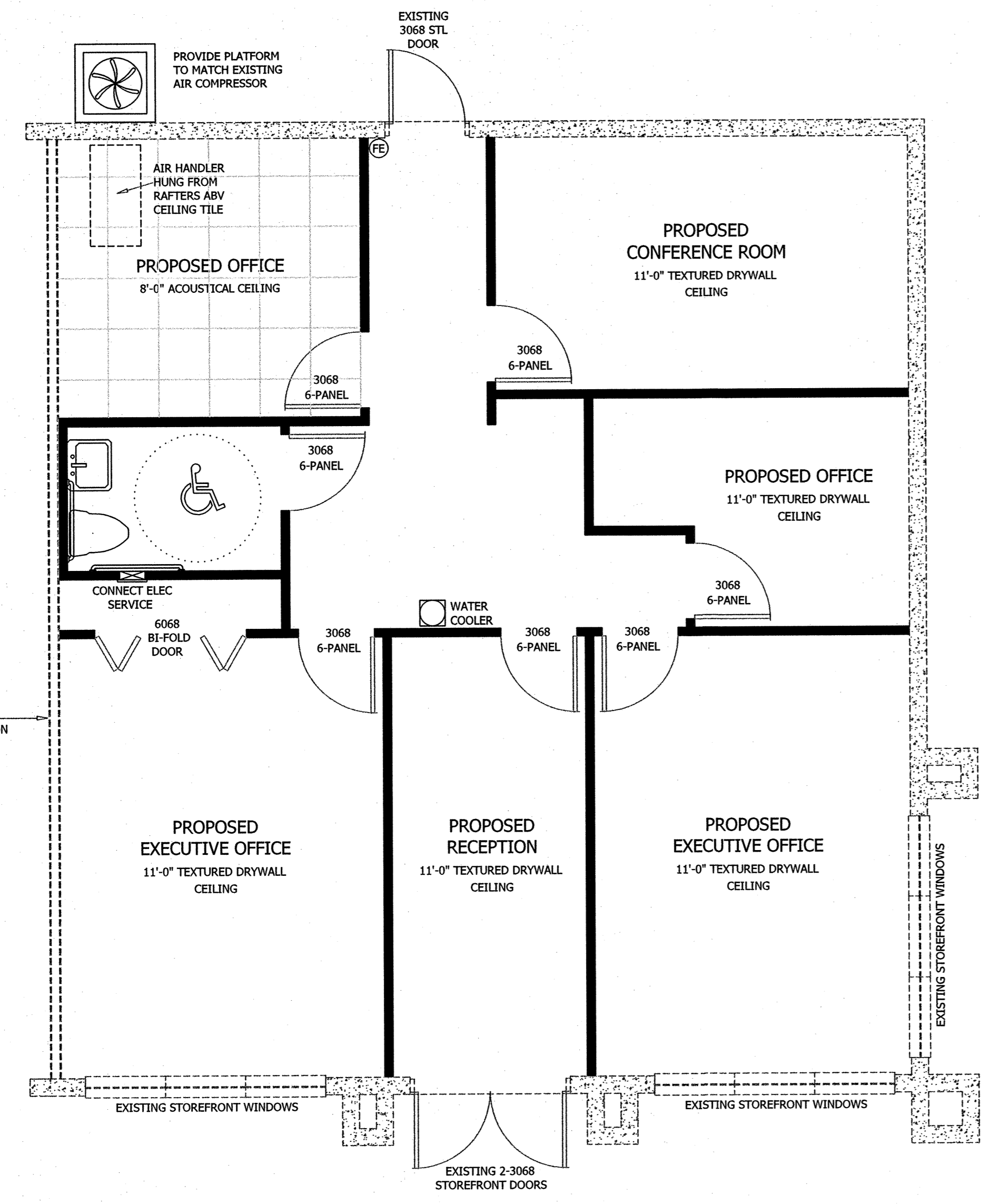
SHEET DATA

FLOOR PLAN &
ELECTRICAL PLAN

SCALE 1/4" = 1'-0"

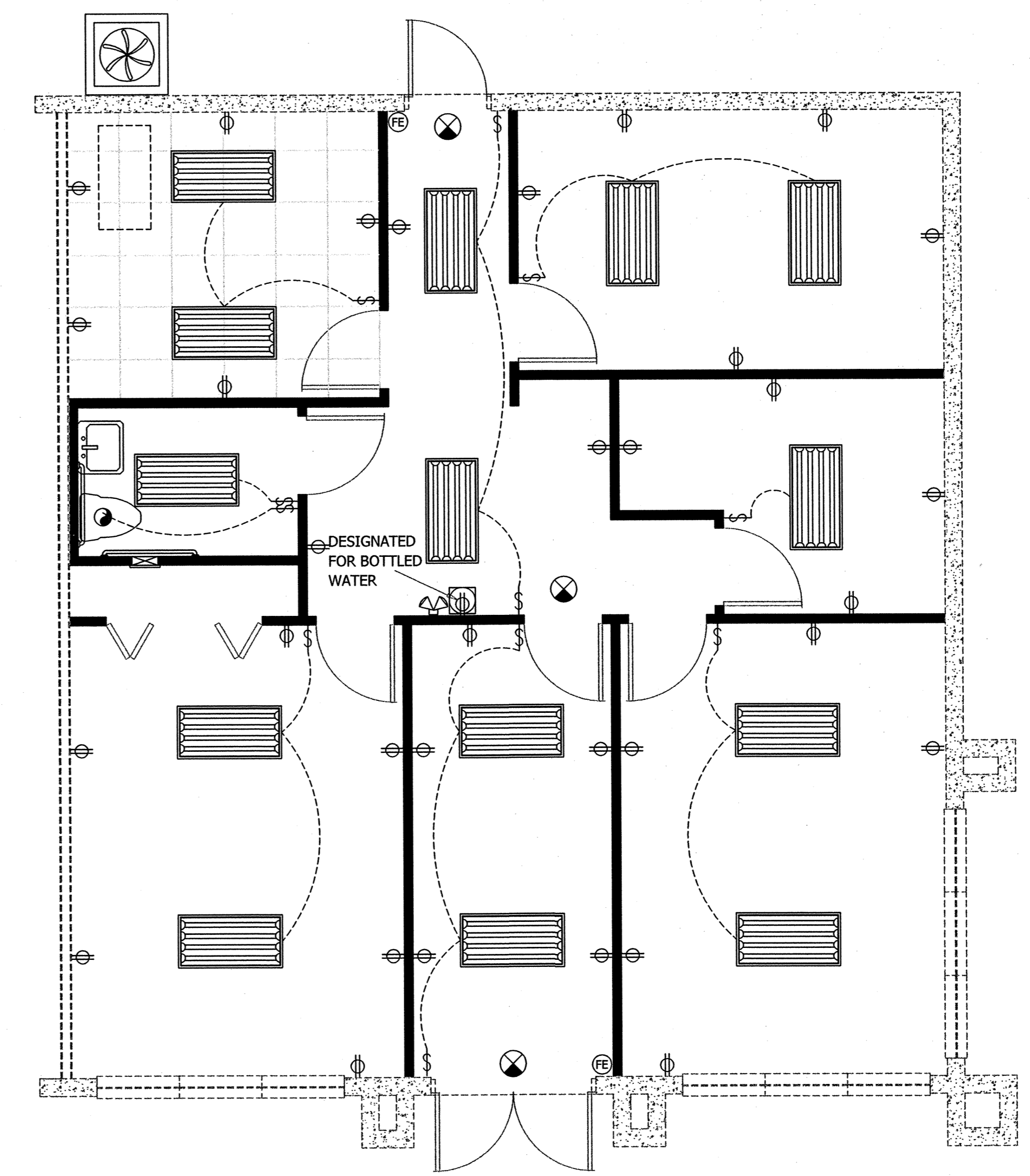
1 OF 2

JOB NUMBER 290175



PROPOSED FLOOR PLAN

NOTE: EXISTING EXTERIOR SHELL, EXISTING PLUMBING AND ELECTRICAL CONDUIT, EXISTING EXTERIOR DOORS AND WINDOWS. CAP ALL UNUSED PLUMBING FIXTURES.



PROPOSED ELECTRICAL PLAN

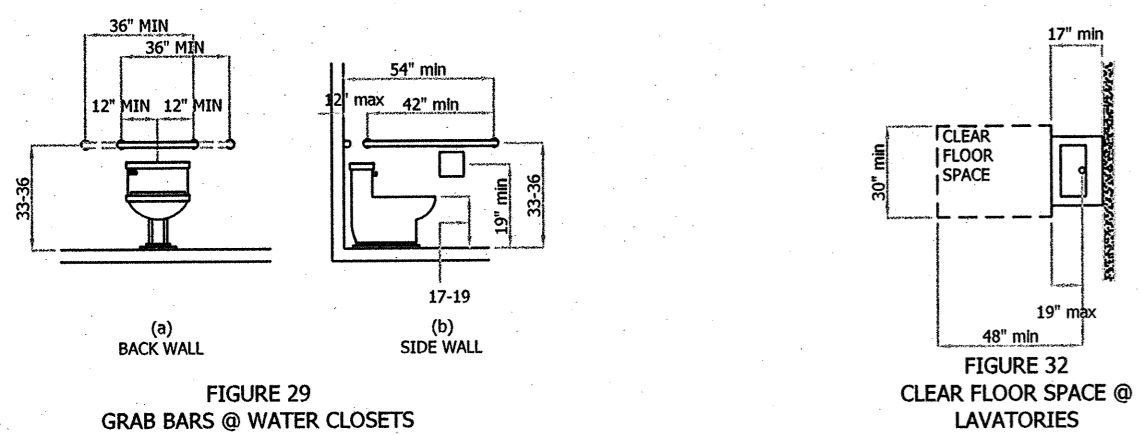
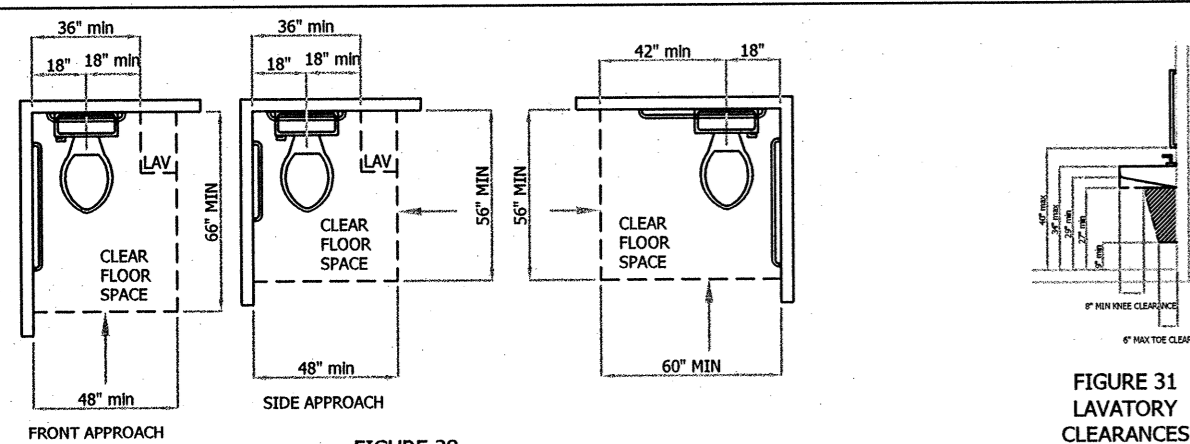
NOTE: EXISTING EXTERIOR SHELL, ELECTRICAL CONDUIT.

GENERAL INFORMATION:		
APPLICABLE CODES:		
BUILDING:	FLORIDA BUILDING CODE	2007
PLUMBING:	FLORIDA PLUMBING CODE	2007
LIFE SAFETY:	NFPA LIFE SAFETY CODE	2005
ELECTRICAL:	NATIONAL ELECTRIC CODE	2005
MECHANICAL:	FLORIDA MECHANICAL CODE	2007
ENERGY:	FLORIDA ENERGY CODE	2007
FIRE:	FLORIDA FIRE PREVENTION CODE	2007
ADA:	FLORIDA ACCESSIBILITY CODE	2007
NOTE: 2009 SUPPLEMENTS ARE IN EFFECT FOR FLORIDA BUILDING CODES		
OCCUPANCY		
OCCUPANCY / GROUP CLASSIFICATION:	GROUP B - BUSINESS	= 1/100 SQ FT OCCUPANTS
1245 SF TOTAL	1245 SF	= 13
EXITS:		
MAXIMUM COMMON PATH OF EGRESS TRAVEL PERMITTED =	100'	(1014.3)
MAXIMUM TRAVEL DISTANCE =	200 FT	PROVIDED = 53'-3" FT. (1016.1)
MINIMUM CORRIDOR WIDTH =	36 IN	PROVIDED = 56 IN (1015.1)
REQ'D No OF EXITS =	1 EA	PROVIDE = 2 EA
MAX COMMON PATH OF TRAVEL:	N/A FT	PROVIDED: N/A FT
TYPE OF CONSTRUCTION: V-B UNSPRINKLED		
CMU BUILDING, WOOD TRUSSES, STUCCO FINISH		
SPRINKLED / UNSPRINKLED: UNSPRINKLED		
No OF STORIES ALLOWED:	2	(TABLE 503) No OF STORIES ACTUAL: 1
MAX AREA ALLOWED (TABLE 503):	9000	ACTUAL AREA: 1255 - PROJ BUILDOUT
MULTIPLE OCCUPANCY:	N/A	
OCCUPANCY SEPARATION:	NR	TENANT SEPARATION: EXISTING

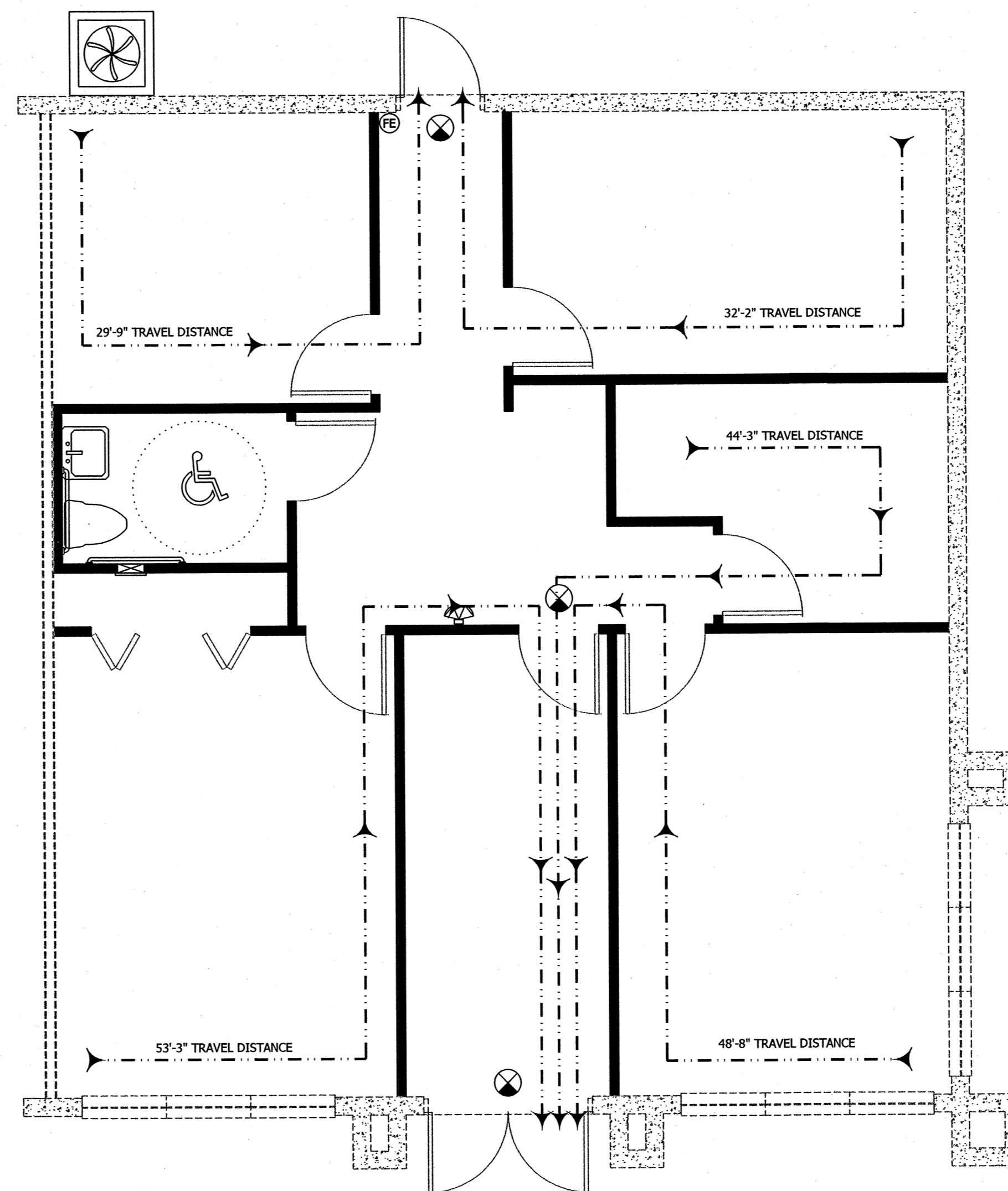
CODES / OCCUPANCY

MINIMUM PLUMBING FACILITIES	
WATER CLOSETS	LAVATORIES
No. 2: BUSINESS MALE & FEMALE 1/25 for 1st 50 and 1/50 for REMAINING --> 49 PERSONS = 1 PROVIDED = 1	No. 2: BUSINESS MALE & FEMALE 1/40 for 1st 50 and 1/80 for REMAINING --> 49 PERSONS = 1 PROVIDED = 1
DRINKING FOUNTAINS	SERVICE SINKS
No. 2: OFFICES 1/100 --> 49 PERSONS = 1 PROVIDED = 1 WATER COOLER	NOT REQUIRED

MINIMUM PLUMBING FACILITIES



HANDICAP DETAILS



PROPOSED LIFE SAFETY PLAN
NOTE: EXISTING EXTERIOR SHELL, ELECTRICAL CONDUIT.

Riddle Consulting Engineers, Inc.

structural
civil
mechanical

Paul D. Riddle, P.E.
Senior Engineer
COA: 0004759

Paul A. Riddle, Jr.
Structural Engineer

ADDRESS 1720 SE CTY HWY 484
BELLEVUE, FL 34420
PHONE (352) 245-7041
FAX (352) 245-5458
WEBSITE WWW.RIDDLEENGINEERING.COM

COPYRIGHT © 2009
THESE PLANS ARE PROTECTED BY COPYRIGHT LAWS. ANY UNAUTHORIZED USES MAY RESULT IN LEGAL ACTION.

ENGINEER'S SEAL

Paul D. Riddle
5-19-09

PAUL D. RIDDLE, P.E.
P.E. 36969

PROJECT DATA

PROPOSED BUILD-OUT FOR:
BULLDITT
CITY OF OCALA, FL

CONTACT INFORMATION

DRAKE CONSTRUCTION SERVICES, Inc.
1224 SE FT. KING ST.
OCALA, FL 34471
352-867-8101

REVISIONS, NOTES

DRAWN: PAUL RIDDLE, Jr.

DATE 5/19/2009

SHEET DATA

LIFE SAFETY PLAN & DETAILS

SCALE 1/4" = 1'-0"

2 OF 2

JOB NUMBER 290175