



stan badz

NEW COLLEGE OF JOURNALISM AND COMMUNICATIONS BUILDING
... work schedule calls for December completion

Journalism building work jumps ahead of schedule

By Betty Morgan
Alligator Staff Writer

Murphy's law: everything that can go wrong will, seems to have found an exception in the construction of the new College of Journalism and Communications building.

The \$5.5-million construction project is 30 to 45 working days ahead of schedule, according to John Carlson, UF planner for the project. "If we stay on the schedule we have now, they could be finished in December," Carlson said.

Cus Klonis, state Division of General Services project manager for UF and an 18-county area, said few construction projects are "smooth running, but some are smoother than others" — such as the journalism building.

"Everything has been falling into place. Materials have been coming in on time," Klonis said. And he attributes the success to good organization and planning. "The supervision of a job is very important...the Drake Construction Co. (of Ocala) is a good outfit."

Drake's success, however, is not only with the journalism building. Journalism Dean Ralph Lowenstein said, "The other project Drake is working on is also ahead of schedule...so it's not just our building."

Drake is constructing the \$5.6-million General Purpose Building B, scheduled to be completed March 7, Carlson said. The massive structure, with suspended concrete stairways seemingly floating in the air, was

ahead of schedule, according to foreman L.D. Underwood, but a functional problem in the air-handling units pushed the progress back to schedule.

However, the construction of the journalism building has been gaining by leaps and bounds.

Lowenstein said after an initial four-week delay when a subcontractor had to redo the foundations, the construction regained those four weeks plus another five.

Drake's journalism building project Manager George Werner said, "We're going to try to have it done by the first of December." He said the reason the project is going well is because of thorough planning and immediate ordering of materials.

"We'll get a lot of stuff before we need it. But...if you do it right when you start, you have fewer problems," Werner said.

Werner credits the swift journalism building construction to foreman "Moon" Lester.

"He's really pushing it," Werner said.

Back at the muddy site where the journalism building is crawling toward the sky sitting inside a trailer with his feet propped on a shelf beside his silver hard hat, Lester planned a delivery on the phone.

"All I do is plan my work and work my plan," Lester explained. "It's just good close, constant supervision that brings the necessary results," he said, adding that he meets with his workers once a week.

"Murphy's law has a lot to do with when you finish. Whatever can happen will happen in construction," he said.

independent
florida

alligator

Published by Campus Communications, Inc., Gainesville, Florida

Not officially associated with the University of Florida.

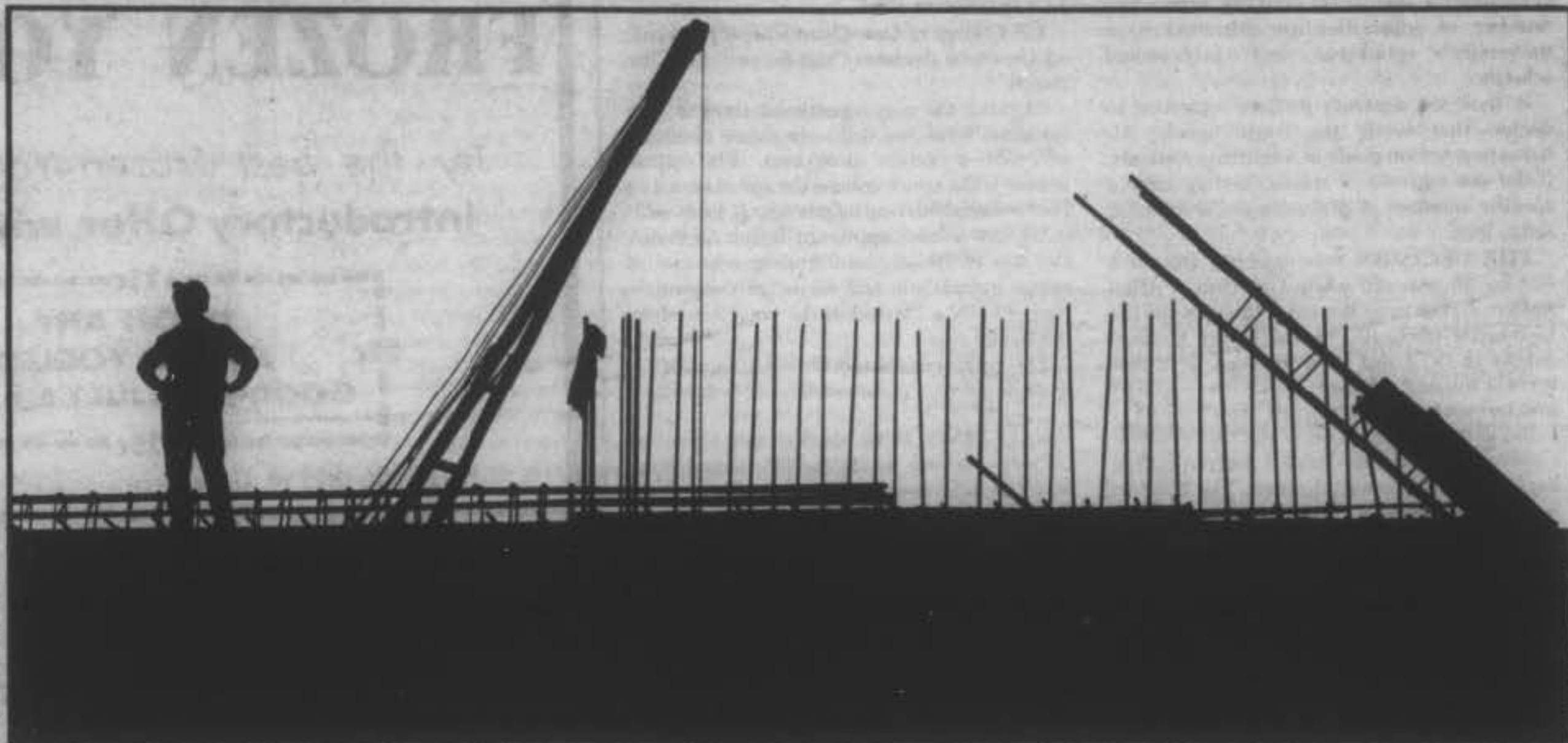
thursday

june 29, 1978

volume 70, no. 152

Solitary Man

Looking away, a lone construction worker stands atop UF's new architecture building scheduled for spring completion. Perhaps he envisions the future profile of UF as construction remolds the skyline.



curtis craver



RING POWER

LIFT TRUCKS ENGINES
EARTHMOVING EQUIPMENT



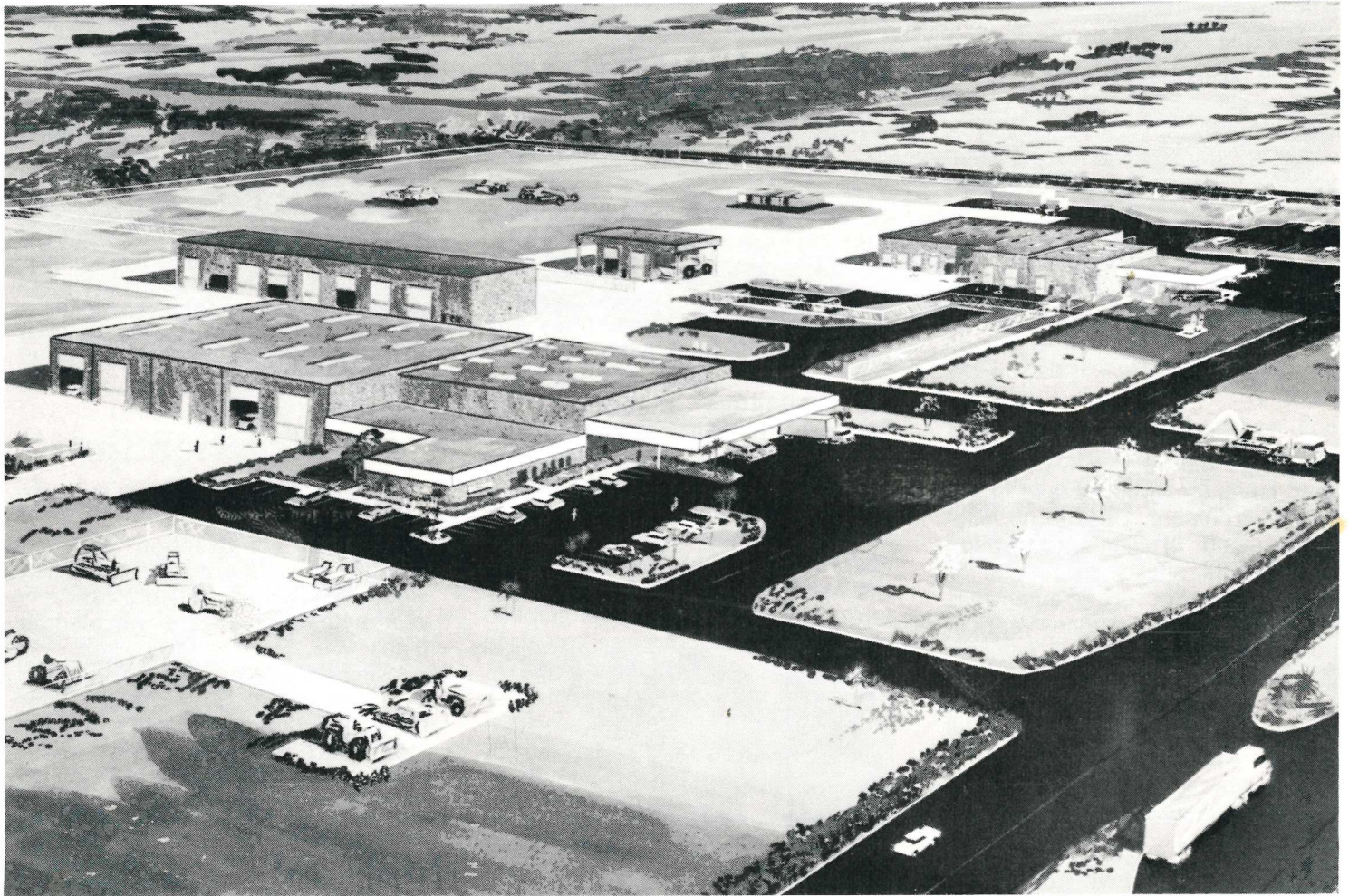
CATERPILLAR
SALES, SERVICE & PARTS

JACKSONVILLE
OCALA
TALLAHASSEE

NEWS

Vol. 14, No. 3

1979



RING POWER'S NEW FACILITY STARTED IN OCALA

This is an artist rendering for the new 92,000 square foot facility being built in Ocala by Drake Contracting, Inc. of Ocala.

Site preparation has begun on a twenty-seven acre plot four miles North of Ocala, on U.S. 301/441 at the intersection of Northwest 63rd Street. The four building complex is expected to be completed in April, 1980. Ring Power has operated from their present Ocala facility on South Pine Street since 1962.

Sam Hilliard, Ocala branch manager, states that the new facility will be one of the largest and best equipped branch facilities in the Southeast for

heavy equipment, material handling equipment, trucks and diesel engines. One building (far right in above photo) will be exclusively for sales and product support of the Liftruck Division and the servicing of Caterpillar engines, including Cat Diesel Truck Engines in on-highway vehicles.

The main building will be for offices, sales and product support for the heavy equipment lines. The third building (between the main building and Liftruck) is for fabrication, welding, undercarriage work, cleaning and machine preparation. The small fourth building houses utility services.

Ring Power president Lance Ringhaver indicates that the investment in Ocala, including property acquisition, construction, equipment and tooling, is expected to total about three and one-half million dollars. The primary function of the facility is support for the products marketed by the dealership in Marion and surrounding area.

The Marion County Board of County Commissioners previously approved and adopted a resolution for Industrial Development Bonds for financing this new construction in Marion County.



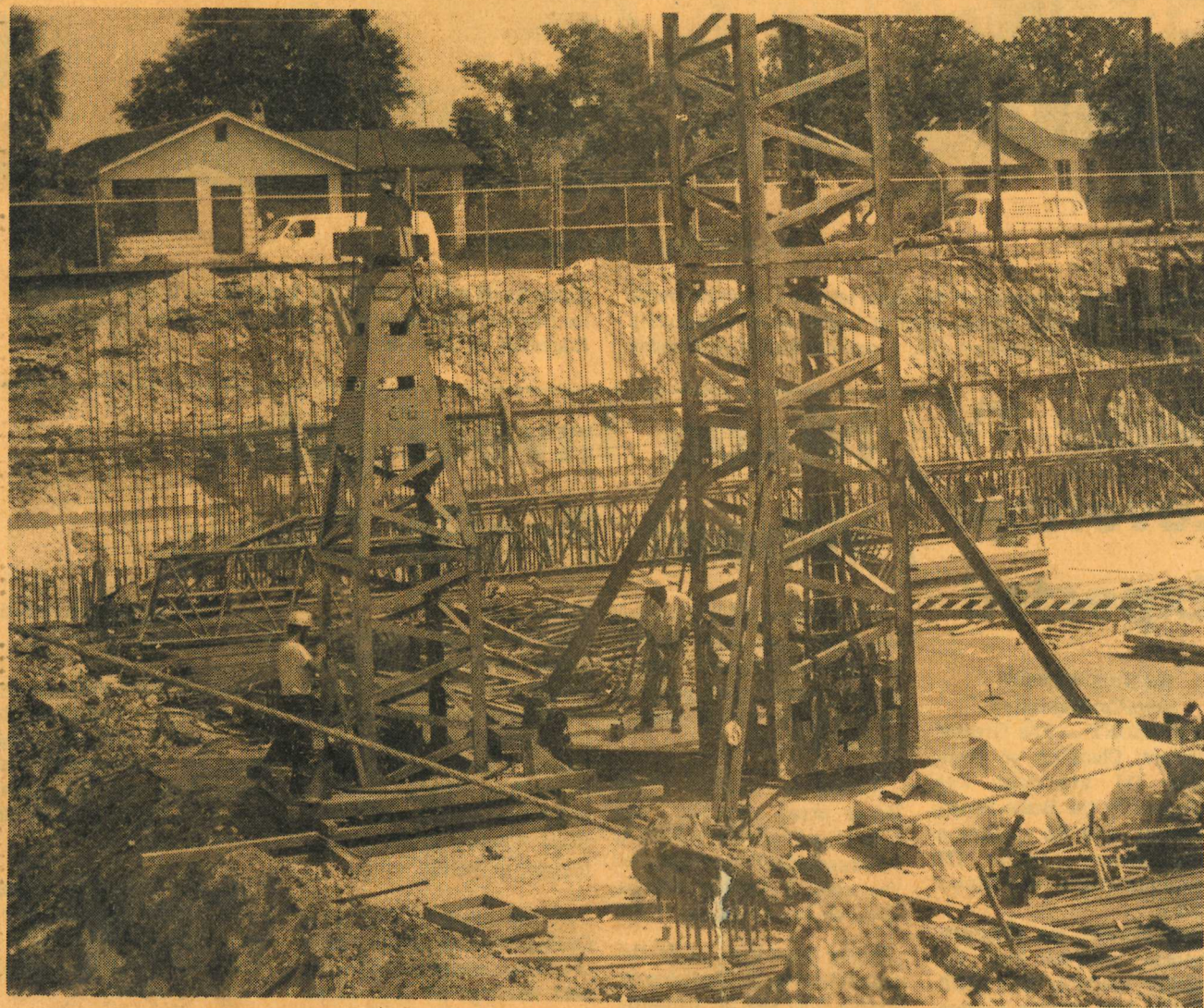
OSB 11/16/14, The Way It Was, 1969. Ocala Public Library. Drake Construction Co.



The Daily Commercial

VOLUME 95 NUMBER 234

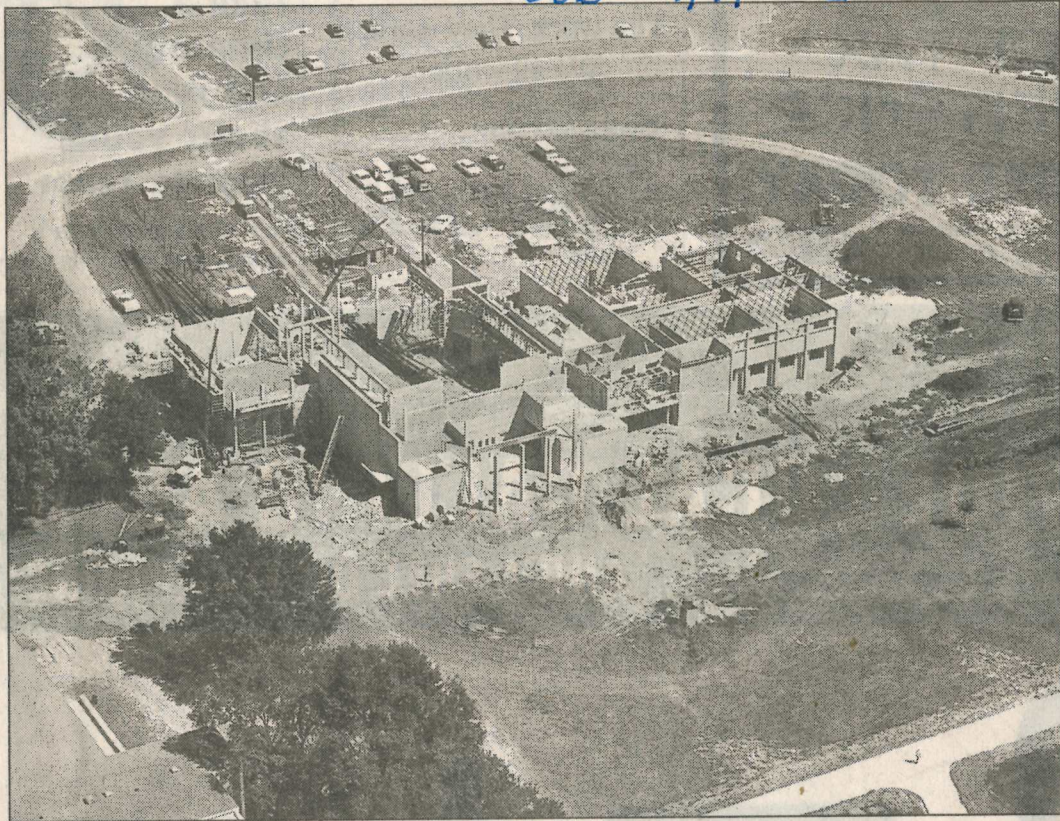
LEESBURG, FLA. (32748) FRIDAY, SEPTEMBER 29, 1972



Beginning At The Bottom

Construction crew working for Drake Construction company of Ocala are shown assembling parts of a permanent crane in the basement of the multi-million dollar addition to Florida Telephone Corporation in Leesburg. Having already used 1,000 yards of concrete the building is just in the beginning stages of a 4-story building.

OSB 4/7/2002



STAR-BANNER FILE

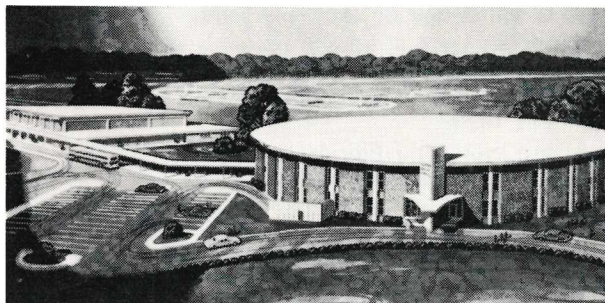
The Way It Was

The Fine Arts building at Central Florida Community College takes shape in November 1967, as shown in this aerial photo taken by Art Kumkel of Summerfield. It was scheduled for completion in mid-1968. If you have a photo to share, please send a copy to The Way It Was, Attn. David Cook, P.O. Box 490, Ocala, 34478.

DRAKE CONSTRUCTION CO.

Prestressed concrete adapts to a variety of forms

OWNER: Marion County Board of Public Instruction. **ARCHITECT:** J. C. (Berry) Walker, Ocala, Fla. **GENERAL CONTRACTOR:** Drake Construction Co., Ocala, Fla. **PRECAST & PRESTRESSED STRUCTURAL UNITS:** Dura-Stress Inc., Leesburg, Fla. **PRECAST LINTELS AND SILLS:** Wekiwa Concrete Products, Zellwood, Fla. **READY MIX CONCRETE:** Thomas Concrete Co., Ocala, Fla. **CONCRETE MASONRY UNITS:** Cummer Inc., Kendrick, Fla.



Students began attending classes in this new Ocala High School in January of this year. It is designed to accommodate 1200 students.



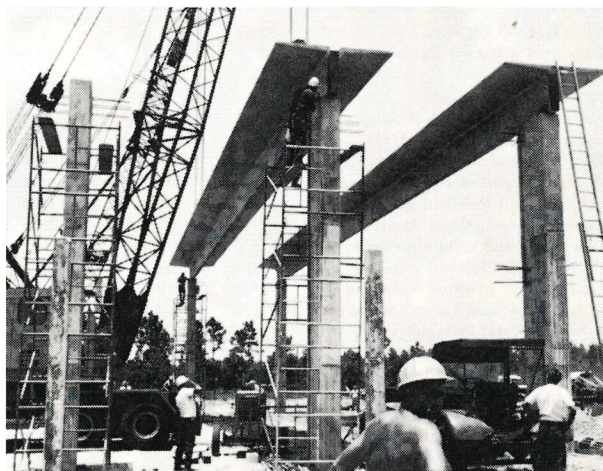
This new high school in Ocala, Florida is another example of how prestressed and precast concrete can serve both functionally and esthetically. The unusual circular classroom building and adjacent gymnasium show the excellent adaptability of this material.

Dura-Stress, Inc. used Lehigh Early Strength Cement in the manufacture of the precast and prestressed structural units in this school. Here, as in almost any precast work, this cement benefits precastor, erector, and architect alike. Quicker re-use of forms. Earlier delivery of units. Orderly on-time construction scheduling.

Be sure to check the advantages of precast and prestressed concrete before you start plans for your next structure. Lehigh Portland Cement Company, Jacksonville, Fla. 32216.

LEHIGH

The circular structure is 232' in diameter and 27' high. In addition to the huge single T's in the gym, the project has 113,464 sq. ft. of double T's; 4594 sq. ft. of 8" flat slabs; and 3673 lineal ft. of structural beams.



Eight Lin T prestressed beams compose the roof structure of the center portion of the gym. Beams are 106'8" long, 8' wide.